

# Trinity

COLLEGE UNIFORMS

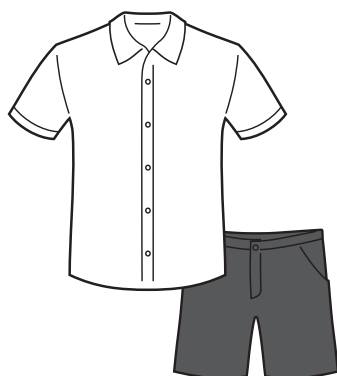


# Uniform Requirements

School uniform items can be purchased from Borne Apparel  
216 Murray Street, Colac | Monday-Friday 9:00am-5:00pm Saturday 9:00am-1:00pm

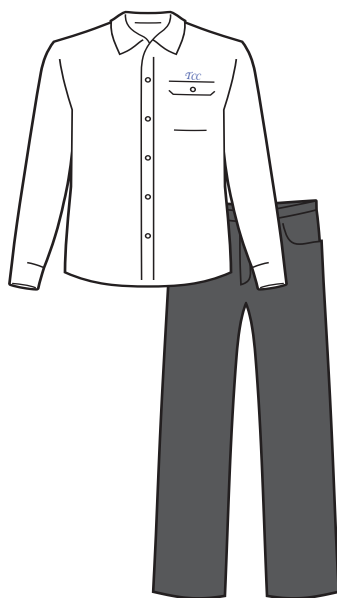
## Male Uniform

### Summer



or

### Winter



### All Seasons



#### SUMMER UNIFORM

Grey shorts	\$40
Grey trousers youth	\$50
Grey trousers adult	\$50
Shirt white short sleeve	\$35
Grey socks 2 pairs	\$15
Wide-brimmed hat (Terms 1 & 4)	\$20

#### Plus

College jumper size 9-18	\$75
College jumper size 20-28	\$80
Softshell coat	\$95

#### WINTER UNIFORM

Grey trousers youth	\$50
Grey trousers adult	\$50
Shirt white short sleeve	\$35
Shirt white long sleeve	\$40
Grey socks with red stripe 2 pairs	\$15
Softshell coat	\$95

#### Optional

College jumper size 9-18	\$75
College jumper size 20-28	\$80
Beanie	\$25
Scarf	\$10
Gloves	\$6
College Tie	\$25
Wool blazer	\$140

- All items are purchased from our Uniform Shop at Borne Apparel except grey (Male) or white/navy (Female) crew socks can be purchased elsewhere.
- Students require polishable black lace-up school shoes – no boots or sport shoes.
- Please check the College Uniform Regulations to ensure shoes comply.

# Uniform Requirements

School uniform items can be purchased from Borne Apparel  
216 Murray Street, Colac | Monday-Friday 9:00am-5:00pm Saturday 9:00am-1:00pm

## Female Uniform

### Summer



### Winter



### All Seasons



#### SUMMER UNIFORM

Dress junior	\$65
Dress 6-16	\$70
Dress 18-26	\$75
Navy shorts	\$45
Shirt white short sleeve	\$35
Shirt girls blouse	\$35
White socks 2 pairs	\$15
Navy socks 2 pairs	\$15
Wide-brimmed hat (Terms 1 & 4)	\$20

#### Plus

College jumper size 9-18	\$75
College jumper size 20-28	\$80
Softshell coat	\$95

#### WINTER UNIFORM

Navy pants girls 10-16	\$40
Navy pants ladies 8-20	\$44
Kilt	\$110
Shirt white short sleeve	\$35
Shirt white long sleeve	\$40
Navy tights	\$12
Softshell coat	\$95

#### Optional

College jumper size 9-18	\$75
College jumper size 20-28	\$80
Beanie	\$25
Scarf	\$10
Gloves	\$6
College Tie	\$25
Wool blazer	\$140

# Uniform Requirements

School uniform items can be purchased from Borne Apparel  
216 Murray Street, Colac | Monday-Friday 9:00am-5:00pm Saturday 9:00am-1:00pm

## Sport Uniform



### SPORT UNIFORM

Rugby top 12, 14, XS	\$85
Rugby top S, M, L, XL-XXXXL	\$90
Track pants fleecy child	\$55
Track pants fleecy youth	\$55
Sport shorts	\$26
Polo shirt 10-16	\$35
Polo shirt S-XXXL	\$38
Polo shirt long sleeve	\$42
Sport socks TCC logo	\$10
Wide-brimmed hat (Terms 1 & 4)	\$20

### ADDITIONAL ITEMS

College backpack	\$65
Science laboratory coat	\$30

- All items are purchased from our Uniform Shop at Borne Apparel except white sport socks can be purchased elsewhere.
- Plain navy t-shirt can be worn under sport shirts for extra warmth.
- Please check the College Uniform Regulations to ensure shoes comply.
- College backpacks are compulsory.



# College Uniform Expectations

## College Uniform

**Trinity College believes that the correct wearing of the school uniform has a major impact on the culture of the College. Students who are prepared to wear their uniform with a sense of pride and respect also tend to be more connected with the College and most importantly their studies. In addition, students show their belonging and loyalty to the College by wearing their school and sports uniforms neatly and correctly.**

The uniform is to be worn between home and school, in class and on other occasions as required. When wearing the College uniform, students must ensure their uniform is neat and correct, whether on or off campus. When attending school excursions, students must wear full and correct school uniform, unless otherwise directed by the staff member in charge of the excursion.

All items of uniform are sold from Borne Apparel and will carry the school logo, including the compulsory Trinity College backpack. It is compulsory that all students wear these correctly monogrammed items.

Mixing of normal and sport uniform is not permitted.

All items of the uniform should be clearly and permanently marked with the student's name.

### **UNIFORM EXPECTATIONS**

When a student is not wearing the correct uniform, parents/carers must contact the relevant Homeroom Mentor or Year Level Coordinator by phone or email. Students who arrive at school not in correct uniform and without notification from parents and carers, will be questioned by their Homeroom Mentor and (where possible) asked to remove incorrect uniform items.

Students may also be asked to put on the correct laundered uniform from the second-hand uniform stored at the College. Parents/Carers can expect the Homeroom Mentor or Year Level Coordinator to make contact by phone or email.

### **FOOTWEAR**

Trinity College requires students to wear the traditional black, polishable school shoe that has a raised heel, NOT the variety resembling black runners.

Trinity College expects sports shoes to be ones designated for sporting activity, NOT soft canvas shoes or street wear shoes, as they do not have adequate cushioning and support for safe participation.

All decisions on appropriate footwear are at the discretion of the Director of Wellbeing.

### **SPORT UNIFORM**

The sports uniform may be worn to school in place of normal school uniform on days of physical education classes or sporting activity.

Trinity sports socks or plain white socks are expected to be worn with the Sport uniform.

Note that black socks are not acceptable for either Sport uniform or school uniform.

The footwear for Sport uniform must be suitable for physical activity. Slip-on shoes, canvas shoes or boots and sporting companies' fashion shoes do not have the required cushioning and support for safe participation in both the short and longer term. Therefore, they are not permitted. Parents and carers are asked to be mindful of this safety element when purchasing runners for Sport.

The College wide brimmed hat must be worn at break times and during sport classes for Terms 1 and 4. It is important that all students have their hat at school. Torn or graffitied hats must be replaced immediately. Replacement hats can be purchased from Borne Apparel or College reception.

### **LEAVERS' JACKET**

A commemorative jacket is available for Year 12 students to purchase and may be worn in place of the College softshell jacket throughout the year. Contact the Director of Wellbeing if you require this item.

## Jewellery, Hair and Accessories

**These guidelines are set in the context of the school's attempt to ensure consistent neatness and cleanliness, as well as accepting responsibility for the health and safety of students in and out of class.**

If in any doubt please contact the Director of Wellbeing for clarification. The Principal reserves the right to determine what is appropriate in all cases outlined below

### **JEWELLERY**

Jewellery must be discrete and can include any of the following:

- One bracelet, one watch, one fine necklace (with or without a small attachment).
- No more than three small rings.
- Maximum of three sleepers or small studs in each ear.

Students are not allowed:

- Visible tattoos or body piercings. Should a student have a nose piercing it is either removed during the school day, covered or a clear retainer is worn.

### **MAKE UP AND NAIL POLISH**

Students are allowed:

- Short, natural nails with clear or natural/soft coloured nail polish.
- Minimal make up.

### **HAIR**

Students are allowed:

- Neat and tidy hair with natural colours and should avoid excessive tints (such as blue, green, pink) which are not appropriate in the school setting.
- Ribbons/hair ties (preferably in Trinity colours)
- Males must be clean shaven.

Students are not allowed:

- Exaggerated hair styles (such as mohawks, dreadlocks or mullets). The College reserves the right to label a hairstyle as 'exaggerated.'

### **OTHER**

Navy blue, full-fingered gloves and Trinity navy blue scarves and beanies may be worn outside of the classroom for extra warmth.



**WE MAKE A DIFFERENCE.**

Trinity College Colac  
Gulidjan Country, 119 Hart Street, Colac, Victoria 3250  
P 03 5233 9200 [www.tcc.vic.edu.au](http://www.tcc.vic.edu.au)